

split-fins...does brand really matter?

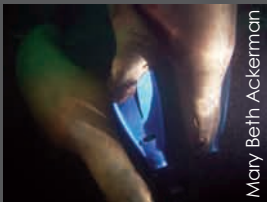
Apollo introduced split-fin technology to diving. We boldly asked the dive community to consider our bio-fin. The future of split-fins hinged on the fins ability to stand up to our claims.

Our team embraced the Natures Wing tm idea and spent years tweaking it to perfection. As a manufacturer with 40 years experience designing gear for many companies; we knew even the smallest detail could make a difference. Material, angles, blade length; we tried them all. In 1998 the first bio-fin was sold. Rave reviews followed! **Tester's Choice**" SDM Fin Review 1999-2007

At first, we were the only company to consider the split-fin a viable option. Word spread and the bio-fin became the chosen fin of recreational, commercial, and military divers. In 2002 other manufacturers began offering their own version of a split-fin. Today, there are many brands available.

Yes! Brand does really matter. It is the **difference between exertion and enjoyment.** Test after test has confirmed the superiority of Apollo bio-fins. Design elements separate Apollo's bio-fin from other brands.

- 100% Natural Rubber
- 20° Angle



Mary Beth Ackerman

The purity of rubber and compression molding chosen for all Apollo bio-fins is a slower and more costly option than the injection molding, plastic, and partial rubber options chosen by every other manufacturer.

Others may advertise slick sounding features and materials. Take heed. Peak performance, maximum comfort, and minimal stress is more than just hype and cosmetics.

What good is speed if your are sucking too much air and cramping from the effort. Comfort is also key but not very useful without performance. It is simply not necessary for any other split-fin to have the overall top rating of an award winning bio-fin. It just has to look like it will!

In a sea of imitators; Apollo's our bio-fin series has continually taken top honors. **"Best Overall"** SDM Fin Review 2002 - 2004 **"Tester's Choice"** SDM Fin Review 1999 - 2007 (SDM) Scuba Diving Magazine retired award for best overall in 2004.

Which bio-fins won "Tester's Choice"? SDM protocol states that qualifying fins must be new to the test process. Apollo has submitted a different model bio-fin annually. Every submission has won. Apollo's bio-fin series is clearly the benchmark against which any new fin should be tested. In recent years SDM began publishing the actual data used. Great for comparing the performance with any fin that may come along in the future.



issue excessive air use, leg cramps, foot pain, ankle pain, exhaustion and just plain can't keep up with other divers

solution bio-fin series: pro, pro-c, and uni full foot

- effortless kicking with little to no strain on ankle and knee joints
- highest speed and endurance levels in fast current; free from cramping commonly caused by lactic acid build up
- up to 40% reduction in muscle fatigue and air consumption
- increased dive time longest recorded bottom times in testing against alternate brand split fins and traditional paddle fins
- open toe design for additional comfort in this sensitive area



ON THE RECORD: Testers' Choice
 2007 Bio-fin pro-c white
 2006 Annual fin test was not held
 2005 Bio-fin pro-c yellow
 2004 Bio-fin pro yellow & Bio-fin pro xt-c
 2003 Bio-fin pro black Bio-fin pro xt
 2002 Bio-fin pro metallic blue
 2001 Bio-fin pro metallic silver
 2000 Bio-fin pro black & ex
 1999 Bio-fin pro black & eco
 see website for additional info

"only open heel fin to earn an Excellent rating from test divers for power vs. stress" Nov 2007

"outraced all comers on speed test, muscled top score out of thrust, dusted the competition..." Oct 05

bio-fin PRO



model bio-fin pro
style open heel split fin
strap adjustable rubber
material 100% rubber
durometer level 65 - 70
colors black/metallic blue yellow/NEW white/ NEW m.pink (m.pink xs - m only)
sizes XS/S/M/L/XL (size chart p.14)
price \$200



black white m.blue yellow m.pink

bio-fin pro XT



model bio-fin pro XT
style open heel split fin
strap adjustable rubber
material 100% rubber
durometer level 75
color dark gray
sizes M/L/XL (size chart p. 14)
price \$200

bio-fin series features & benefits

The bio-fin series includes several models. Each one is built using the same core materials and design elements for superior comfort and performance.

100% natural rubber optimum weight and movement
built-in 20° angle works with bodies natural angles for maximum thrust and least amount of strain on body
effortless kicking lowest level of resistance virtually eliminates strain on joints

highest speed and endurance levels in fast current even with heavy gear; testers were ahead of the pack, moving in comfort, and free from cramping commonly caused by lactic acid build-up

up to 40% reduction in muscle fatigue, energy use, and the all important air consumption

increased dive time longest recorded bottom times in testing against other brand paddle and split-fins

excellent maneuverability and position control

open toe for additional comfort in this sensitive area

finger loop on strap for quick donning and removal

In producing blue and yellow bio-fins the hardness level becomes slightly higher than black, yet these colors retain the same overall feel in use. The eXtra Torque models (XT / XT-C) are specifically produced with a significantly higher durometer (hardness). See page 11 to determine which bio-fin is for you.

The **XT** options were designed for the diver that wants the benefits of a split-fin but prefers a more traditional paddle fin feel. The feel could have been created by adding a synthetic material. But that would have left comfort and performance lacking. We chose to produce the XT in 100% rubber because it outperforms any other option. The durometer was increased to 75 during production resulting in a fin that provides the highest level of control, comfort and performance possible with a more rigid blade.



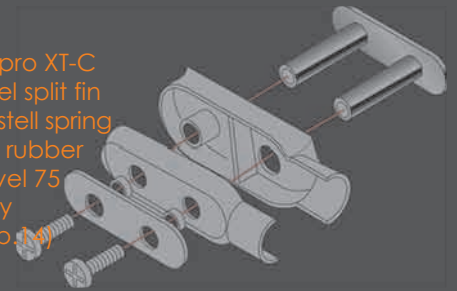
“How do you improve on a fin that’s just about perfect? By ...adding a spring strap.”
Scuba Diving Magazine October 2005



model bio-fin PRO-C
style open heel split fin
strap stainless steel spring
material 100% rubber
durometer level 65-70
color black/yellow
sizes XS/S/ M/L/XL (p.14)
price \$270

NEW bio-fin PRO-C White Spring 07

model bio-fin pro XT-C
style open heel split fin
strap stainless steel spring
material 100% rubber
durometer level 75
color dark gray
sizes M/L/XL (p.14)
price \$270



“Tester’s Choice & Best Overall”

“the original split fin and still a performance leader”

“bar none the fastest open-heel split fin ScubaLab has ever tested”

“Sweet!”

“bonafide speedster”

“powerful, yet comfortable”

“excellent acceleration and maneuverability”

“Excellent rating for comfort... ”

“outraced all comers on the speed test, muscled top score out of thrust, dusted the competition on both slalom and efficiency courses”



NEW bio-fin PRO-C White



bio-fin pro C-series

factory installed stainless steel spring strap

Our bio-fin series has many features exclusive to Apollo. We are very pleased to offer our c-series line; the only split-fin produced with a factory installed stainless steel spring strap.

The bio-fin c-series is the only split-fin with a foot pocket specifically molded for a spring strap system. Rather than attaching hardware to a post; it is integrated into foot pocket wall. A smooth stainless steel plate sits flush with interior wall of foot pocket. Support posts welded to plate run through the foot pocket wall. Strap and other exterior hardware are then tightened down with screws.

fixed setting keeps system in optimum position to insure strap is able and ready to adjust automatically as diving conditions change

superior design stronger hold to ensure system properly supports

rugged coil spring strap stainless steel is stronger than rubber strap

rubber grip protects heel and adds comfort and stability

oversized finger loop easy access even with bulky coldwater gloves

Already have a favorite pair of fins? You can still benefit from our c-series stainless steel spring strap (p. 18)

bio-fin split-fins

We are very proud of our award winning bio-fin series. The "undisputed king" of open heel split-fins. Short of surgical implants; there is only one way to improve on "the fastest open-heel split fin Scubalab has every tested"

Think outside of the box. You can and should have it all! The most comfortable fin, optimum performance, and a great price to boot!

Unite your foot with the fin. Our full foot bio-fin UNI design **converts 100% muscle movement into propulsion.** Fits like a glove and feels like you were born to dive. The perfect choice for diving, snorkeling, and body surfing.

Optimum performance **with or without a boot.** Excellent for warm and cold water diving. A boot or neoprene sock is often used to prevent abrasion and increase comfort. Suggesting use of a boot with a full foot fin is undoubtedly a strange notion to some. Years ago Apollo asked the dive community to consider the bio-fin design. Numerous awards later; split-fins have become the standard.



UNIte foot and fin
100% conversion of
muscle movement
to propulsion.

100% rubber for the perfect balance of performance and comfort. Your body will barely register the effort but you are definitely moving... and moving fast!
built with a 20° angle to work with your bodies natural tendency to bend at both the knee and ankle
100% of muscle movement converts to propulsion
up to 40% reduction in muscle fatigue, energy use, and air consumption; longest recorded bottom times during testing
lowest level of resistance eliminates strain on joints
highest speed and endurance levels in fast current even with heavy gear; testers were ahead of the pack, moving in comfort, and free from the cramping commonly caused by lactic acid build-up
excellent maneuverability and position control
ultra soft foot pocket is built with a lower durometer for easier entry and superb comfort with or without a boot
open at the toe for added comfort

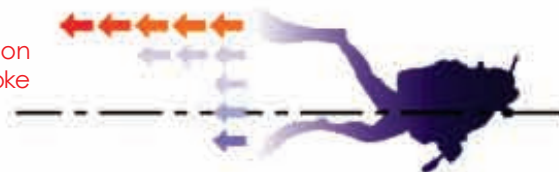
bio-fin pro UNI



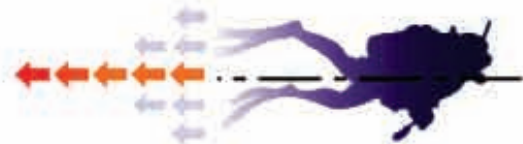
model bio-fin pro UNI
style full foot split fin
strap not applicable
material 100% rubber
durometer level 71-75
color Gray/Cobalt Blue
sizes XS-s/S-m/M-l/L-xl
price \$130

SPECIAL COLOR GRAY
GRAY UNI \$89.95 (also referred to as black XS-s no longer avail)

Paddle Fins
MAX propulsion
downward stoke



Bio-fin series
MAX propulsion
downward stoke
and up stoke



dual propulsion

Much like a paddle fin, bio-fins create a great deal of propulsion with each downward stroke. The key difference is the amount effort required. A paddle fin requires a wider kick and more physical effort than is necessary to generate the same amount of propulsion from the downward stoke of a bio-fin

The bio-fin creates additional significant propulsion on the upstroke. Combining highly flexible 100% rubber with split-fin technology results in equal propulsion from both up and down stokes. That kind of propulsion is simply not achievable with a paddle fin.

size chart

foot length (cm)	22-23	23-24	24-25	25-26	27-28	28-29	30+
w/ 5 mm boot	XS-s	S-m	M-l	L-xl			
w/ 3 mm boot		Xs-s	S-m	M-l	L-xl		
barefoot/neo sock				XS-s	S-m	M-l	L-xl

Full foot fins do not have the range available with a strap type model. Actual foot length is crucial when picking a full foot fin. We suggest measuring in centimeters for a more accurate determination. Size suggestion based on actual foot length is provided in centimeters. Measure length of foot including footwear if applicable to determine optimum size for you.

fins

“revolutionary
breakthrough”
Scuba Diving Magazine Nov 04



Rx **issue** neoprene boots compress at depth causing your fins heel strap to loosen

solution c-series stainless steel strap set

High quality stainless steel spring straps automatically adjust to changing conditions. No more stopping to tighten down a loose strap. Installation is semi-permanent and a little extra effort is required for addition to your current fins. Be prepared to get out a cutting implement and drill. It is so worth it! The spring strap is very strong. A post attachment would have left it vulnerable to popping off and causing loss or injury. These babies are essentially bolted into the fin wall. **ISSUE 2** Rubber is susceptible to nicks and easy breakage. Whether diving for business or pleasure; the time it takes to replace a broken strap can be costly. Don't lose another dollar or miss that once in a lifetime moment to strap problems. **SOLUTION** Produced in stainless steel, spring straps are naturally longer wearing. **BONUS** Do much boat diving? You will find that it is a lot easier to get the fins on and off. As a finishing touch we have also included a large rubber bumper for comfort.

\$85.00 c-series stainless steel spring strap set

Complete set with springs, mounting hardware, and black comfort bumper for one pair of open heel fins. Available in three spring lengths.

- M (250 mm) recommended for fins size XS/S
- L (300 mm) recommended for fins M/L/LL(XL)
- XL (325 mm) recommended for fins size LL(XL) **new size**



Build-to-suit Would you like to change the spring length of your current c-straps? Perhaps a light gray comfort bumper would better suit your fins.
 \$36.00 (2) Spring set 250mm/300mm/325mm (no mounting hardware/bumpers)
 \$12.00 Mounting Hardware (all screws, plates, & covers for one pair of fins)
 \$24.00 (1) Spare rubber comfort bumper for spring strap: black or light gray

click this

Installation Slide Show: www.diveapollo.com (service section/manuals page)



INSTALL A C-SERIES STRAP SET ON YOUR CURRENT APOLLO BIO-FINS AS WELL AS MOST ALTERNATE BRAND SPLIT-FINS

spare straps (standard rubber design)

- \$14.50 (1) rubber strap with male & female buckle one size fits all bio-fin pro available in black or light gray

