

Apollo was the first to begin working with "propellor fin" technology. With any new technology the product must do more than just look and sound good.

It actually had to stand up to our claims!

Don't take our word for it! We let the world's premier independent testing facility come up with the answers.

"Not all propellor fins are created equal"... say the experts



Rodale's Scuba Diving Magazine
"Best Overall" 2001 & 2002 "Tester's Choice" 1999, 2000, 2001, & 2002

• Benefits of bio-fin PRO

- Highest speed and endurance in fast current; even with heavy gear such as dual tanks
- Excellent maneuverability and position control
- Ultimate in comfort; provides the least resistance and eliminates strain on joints
- Muscle fatigue and energy use reduced by up to 40%; prevents cramps and fatigue
- Up to 40% reduction in air consumption
- Longest bottom times

Color: matte black \$190.00 • metallic blue \$200.00
Size: XS 6-7, S 7-8, M 8-9, L 9-11, LL 11w-13+

The size recommendation above is based on standard US men's shoe size and the use of a 5mm boot average sole. Actual fit may vary.

Women should add one shoe size to range.

Apollo bio-fin PRO is now the choice of divers from student to the most advanced technical diver. Your best choice is Apollo,

• How the bio-fin works

Apollo bio-fins provide lift and propulsion with less effort and more power. Unlike old style fins, which "push" water up and down; the Apollo bio-fin provides power, lift, and forward thrust on each stroke.

The Apollo bio-fin directs water flow over the leading and trailing edges of the fin blade. The result is lift and acceleration just as in an aircraft wing.



• Stroke innovation

The old fin kick was wide and awkward. Using paddle style fins, the divers body swung from side to side with each stroke and was off center and unstable. A short more natural flutter kick, similar to normal freestyle swimming kick, works best with this new technology.

Stroke of other fin



Stroke of Bio-fin

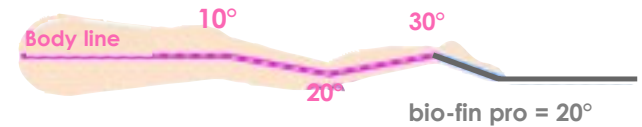


• Material is unique

Rubber can be a little heavier on the surface than the plastics used for most fins. However, the comfort, flexibility, and responsiveness of 100% natural rubber is unique. Your fins are also less likely to break the surface, which can cause a loss of momentum that may occur with floating type plastic diving fins.



• Angle is precise



The blade of the bio-fin pro is designed with a 20° angle to accommodate a divers natural tendency to bend slightly at the knees in addition to the obvious bend at the ankle. This angle is necessary to achieve top performance level and comfort. The result is better propulsion and the least amount of stress on the body

