

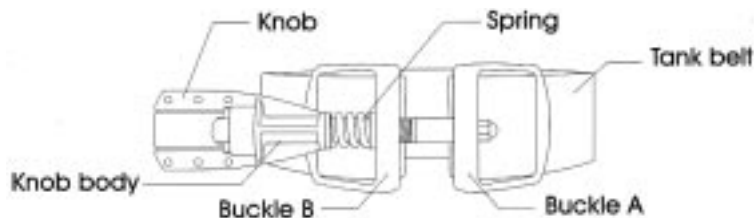
# bio-tank lock

10x more tightening torque  
Apollo's tank retention system for use with any bcd

Congratulations on your purchase of Apollo's Bio-tank lock.

Many divers have experienced tank slippage while diving. The Bio-tank lock enables all divers to have their tank held securely with little strength or effort.

The turning knob tightens the belt and provides 10x more torque than possible with a traditional retention system. The Bio-tank lock offers you a higher gear standard.

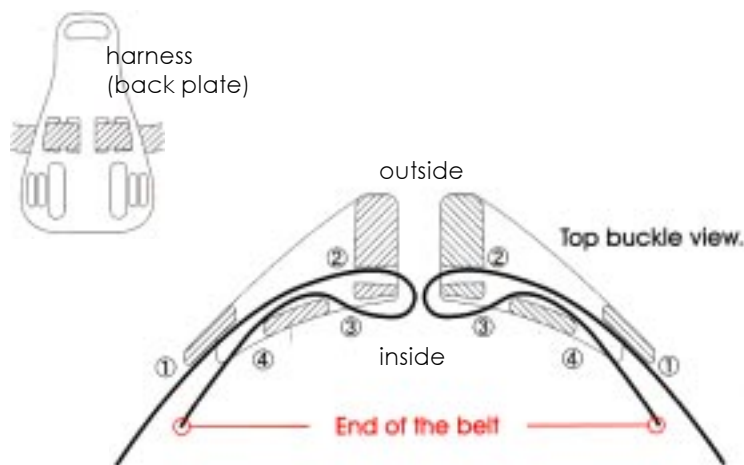


## Installation on your personal or rental bcd

Remove your current strap and buckle from harness of bcd. You will need to use the strap provided with your tank lock to insure proper fit and function.

Turn the knob body of tank lock to loosen assembly and allow easier removal of strap from Buckle side A. Install system with knob facing the side you prefer.

Thread the included tank belt through your harness using same method as original strap. Then re-thread strap thru buckle assembly in order indicated by numbered drawing at right.



**CAUTION** Adjust the tank belt to be equal length on both sides of buckles A and B. After threading, the end of belt should be inside and touching the tank when installed. If threaded incorrectly with ends of belt on the outside instead of inside against the tank, the belt can slip out from buckle.

## Adjusting the belt for various tank sizes

Remove system from tank before attempting to adjust belt.

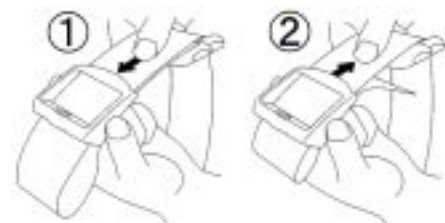
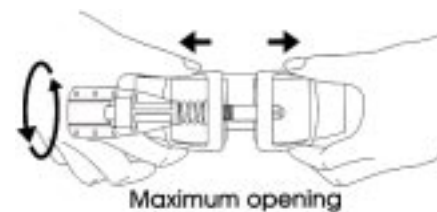
Fully soak the belt in water to allow strap expansion.

Loosen the knob assembly for maximum separation of buckles A and B. If this does not allow sufficient space to slide over top of tank then you will need to adjust threading. Using a consistent tank size will reduce the need to adjust tank belt.

Adjust strap to same diameter of current tank in use.

1. Hold Buckle A firmly and push the belt out as shown.
2. Adjust the length by pulling on one side of belt as shown.

This instruction manual was prepared for those who have obtained a C-card. Be sure to store this manual in a safe place, even after reading. If you are unsure of any item(s) herein, be sure to contact your dealer or Apollo for advice. The Bio-tank lock is designed for diving use only. Do not attempt to use for any other purpose.



**DANGER** Due to safety considerations, those who have not obtained a C-card (attesting to completion of training) from an entity providing diving instruction must not use this product. Make sure you are in good physical condition before you scuba dive. If you begin to feel cold, tired, or unwell, do not overexert. Stop your dive.

**CAUTION** Before using under special conditions and environments, inquire with your Apollo retailer or Apollo Sports USA.

## Buckle/Knob Assembly position

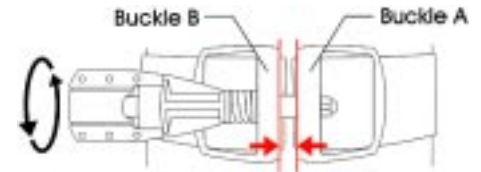
Place the buckle at side of tank to help prevent it from getting caught up in rope, net, or debris when diving. When system is on tank you should be able to push knob assembly in and have it tucked against bcd while diving.



## Tank Retention (holding tank in place)

Once you have slid tank lock over valve and onto tank make sure the buckle is placed as directed above. Once properly positioned; tighten system and secure your bcd to tank.

Tighten by turning knob assembly to compress spring. Leave at least 1 cm (**3/8" - 1/2"**) space between Buckles A and B.



Always leave **3/8" - 1/2"** space between buckles



**WARNING** Tank lock will automatically compensate (tighten) to keep tank secure during a dive. If proper space is not available; damage to buckles and knob assembly will eventually occur.



**CAUTION** Over tightening can cause screw head to rise and become visible. A visible screw head indicates that you have over tightened and that stripping of knob assembly or damage to buckles may occur.

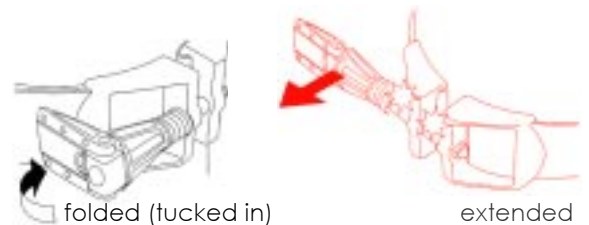


Physically confirm that the tank lock is holding tank in place. After set-up double check the knob is tucked in (rather than extended ) to prevent disruption of your ability to move freely.

Visible screw head indicates system is over tightened. Reverse turn to reduce possibility of damage.

## Removal from tank

The Bio-tank lock can be quickly removed by turning the knob assembly counter clockwise until sufficiently open to pull up and off of tank. Make sure that the knob assembly has been unfolded and extended out prior to turning.



## Cleaning & Storage

Salt water build-up can disrupt operation of knob assembly. You should rinse all equipment including tank lock thoroughly with fresh water to avoid problems associated with this occurrence.

Optimum care would be to soak in fresh water overnight to allow salt particles to loosen from equipment. This would be followed by a thorough rinse and air drying in a well ventilated are.

Never clean with gasoline, paint thinners, alcohol, detergent, or other organic solutions as doing so could cause cracks, damage, and warping of product.

**Warranty** All Apollo products carry a one year minimum warranty against manufacturers defects. Retain a copy of your receipt indicating date and purchase from an authorized Apollo reseller. This information must be provided for warranty consideration.

Apollo reserves the right to examine item and repair or replace as it sees fit. Items submitted for warranty consideration must be done through original place of purchase. Items returned to Apollo without authorization are subject to refusal.

**CLEANING TIP:** Rinse buckets are provided in some areas. These have often been used by multiple people during a day. Salt is left by each prior user. This should not be considered a true fresh water rinse or soak.



Dry in the shade Flowing tap water

